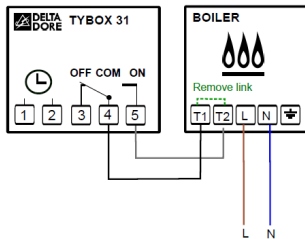


31 Quick Setup Guide (also for 33, 34)

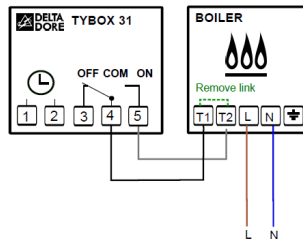
Before you begin please note the following & for any technical queries please contact your area representative through your merchant:

- The wireless models are **PRE-ASSOCIATED**, simply connect the receiver and it is ready to operate.
- The unit is battery powered and has volt free contacts. In most cases wiring is directly to the thermostat input in the boiler via the RT 24V input. Refer to the wiring diagrams for more information.

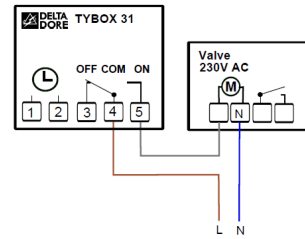
Free voltage connection (Normal Open)
24 V installation



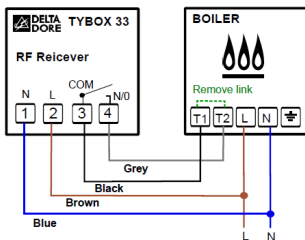
Voltage connection (Normal Open)
230V AC installation



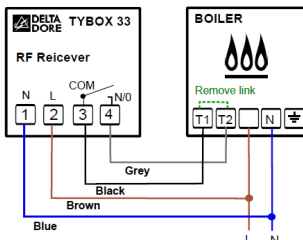
Zone Valve
230V AC installation



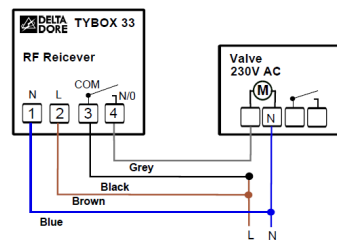
Free voltage connection (Normal Open)
24 V installation



Voltage connection (Normal Open)
230V AC installation



Zone Valve
230V AC installation



1. Set the Temperatures for the Thermostat

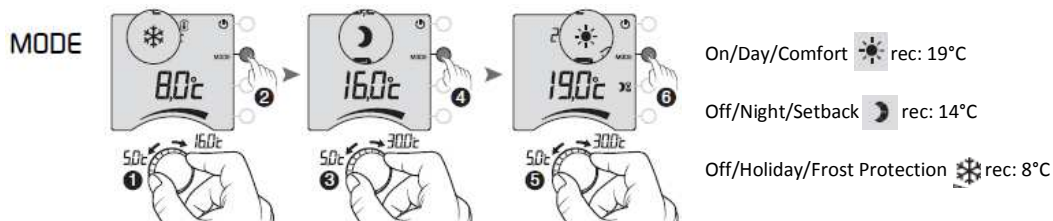
On the face of the thermostat you will find a wheel and three actionable buttons.

a. Option 1: simple increase & decrease

Should you wish to simply operate the unit to increase and decrease temperature (or if you are using it in conjunction with a time clock/programmer and only require one temperature) then simply turn the wheel right to increase temperature and left to decrease temperature (recommended: 19°C).





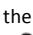

b. Option 2: three temperature options

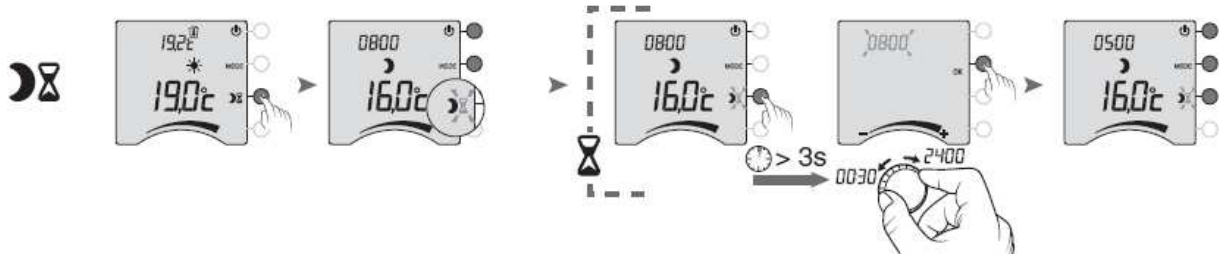
Should you require a little more control then you can input 3 independent temperatures and switch to the preferred one by simply pressing **MODE** to inform the boiler what temperature you want;



c. Other Options: Off and timed setback

To turn the unit off completely press the button next to the  symbol, repeat to turn on.

To turn the unit from a  temperature to a timed  temperature simply press the  button (the temperature is set in the **MODE** menu). This will activate an 8hr count down on the  temperature. Should you wish to change this 8 hr time then hold the  button for 3 seconds and you can use the dial to adjust (from 0:30 to 24hrs), to cancel the action (i.e. upon your return home) simply press the  to cancel.

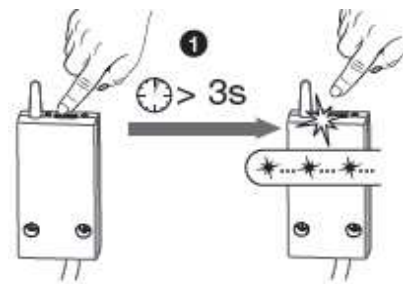


Wireless Configuration: 33, 34

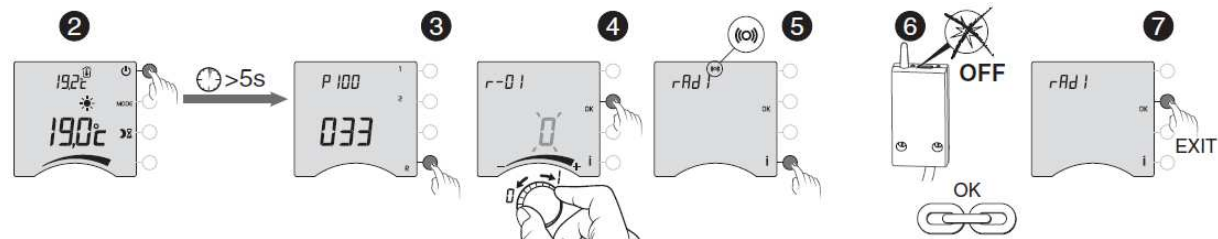
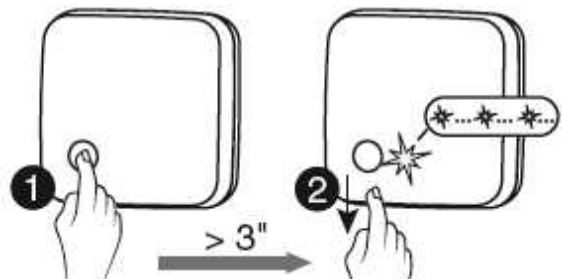
Remember: the product comes **PRE-ASSOCIATED**; the following information is in the event that association is lost or configuration is restored to factory settings.


1. On the receiver, press and **HOLD** the button for 3 seconds, until the LED begins to flash.

33 Receiver



34 Receiver



2. On the transmitter room unit, press and hold the  symbol for 5 seconds to enter configuration mode. Then press the **R** button and ensure that menu **r-01** shows **0**, press **OK**. Finally press the **i** button to initiate association. The screen should now show **rAd 1**. Your product is now associated, confirm this by checking the LED on the receiver has stopped

Additional Information: Receiver Button Functions

Manual Over-ride	=	Press button once (LED on constantly)
Reverse the relay contact (NO/NC)	=	Press and HOLD for 10 seconds (audible click)
Delete All Wireless Associations	=	Press and HOLD for 30 seconds (LED rapid flash & off)