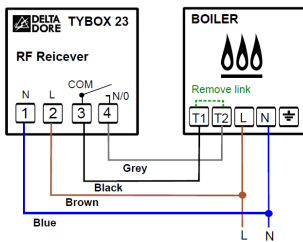


## TYBOX 21 Quick Setup Guide (also for TYBOX 23 & TYBOX 24): FOR INSTALLER & USER

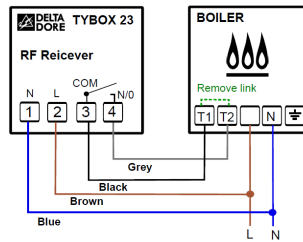
Before you begin please note the following & for any technical queries please contact your area representative through your merchant:

- The wireless models are **PRE-ASSOCIATED**, simply connect the receiver and it is ready to operate.
- Remove front cover by hand to reveal the battery housing and discard the blue tab to activate.
- The unit is battery powered and has volt free & 230v contacts. In most cases wiring is directly to the thermostat input in the boiler via the RT 24V input. Refer to the wiring diagrams below or boiler documentation for more information (For Tybox24 see receiver);

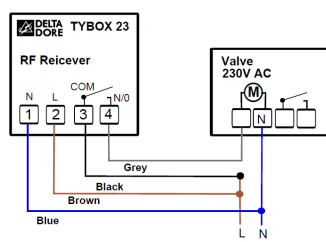
Free voltage connection (Normal Open)  
24 V installation



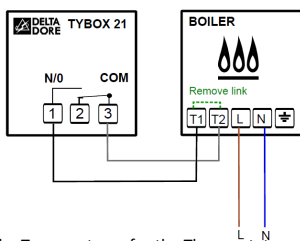
Voltage connection (Normal Open)  
230V AC installation



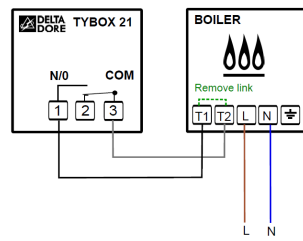
Zone Valve  
230V AC installation



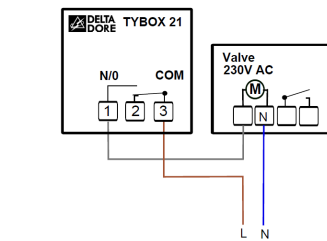
Free voltage connection (Normal Open)  
24 V installation



Voltage connection (Normal Open)  
230V AC installation

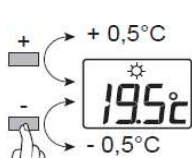


Zone Valve  
230V AC installation




- Set the Temperatures for the Thermostat

On the face of the thermostat you will find three buttons. **MODE** + & -. All functions are performed with these buttons.

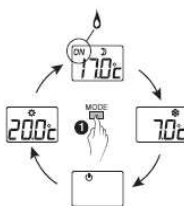


- Option 1: simple increase & decrease

Should you wish to simply operate the unit to increase and decrease temperature (or if you are using it in conjunction with a time clock and only require one temperature) then press **MODE** until you are in the  menu. From here use + & - to adjust the temperature up and down to your preferred temp (recommended: 19°C)


- Option 2: three temperature options

Should you require a little more control then you can input 3 independent temperatures and switch to the preferred one by simply pressing **MODE** to inform the boiler what temperature you want;




On/Day/Comfort –  recommended: 19°C


Off/Night/Setback –  recommended: 14°C

Off/Holiday/Frost Protection –  recommended: 8°C

- Advanced Menus

To access the advance menu press and hold **MODE** for 10 seconds whilst the display is in , then to navigate through the menu you simply press **MODE** one time per advanced option.

There are 3/4 advanced options and they are as follows;

- The  menu, Set point and room temp display.

**Displays the target (Set Point) temperature**, room temperature will appear on display before an adjustment is made **FACTORY SETTING – 01**


**Displays the room temperature**, target (Set Point) temperature will appear while adjustment is being made – **00**

To change between **00** and **01** simply press the + button

- The **0.0°C** menu

This menu enables the user to fix any disparity between the temperature the unit is measuring and the actual room temperature (if any). These parameters can be adjusted up to +/- 5.0°C by simply using the + & - buttons.

**FACTORY SETTING 0.0°C**

- The  menu, Tamperproof function.

Keypad unlocked **FACTORY SETTING – 01**

Keypad locked – **00**

To change between **00** and **01** simply press the + button

- The  menu, Programmer Function (Wireless models only).

Thermostat - **FACTORY SETTING – 00**

Thermostat + Accessory (i.e. window contact MICRO COX) – **01**

Thermostat + Programmer – **02**

To change between **00** and **02** simply press the + button

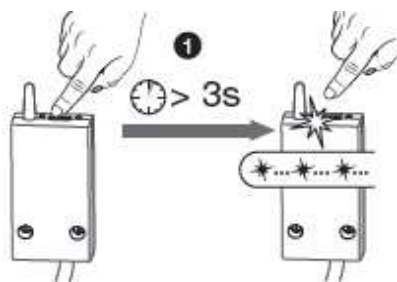
NB: None of the settings are permanent and can be changed to your requirements by accessing the advanced menu again and adjusting to your new desired setting.

### Wireless Configuration: 23, 24

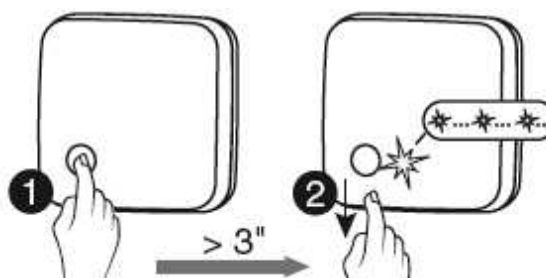
Remember: the product comes **PRE-ASSOCIATED**; the following information is in the event that association is lost or configuration is restored to factory settings.


1. On the receiver, press and **HOLD** the button for 3 seconds, until the LED begins to flash.

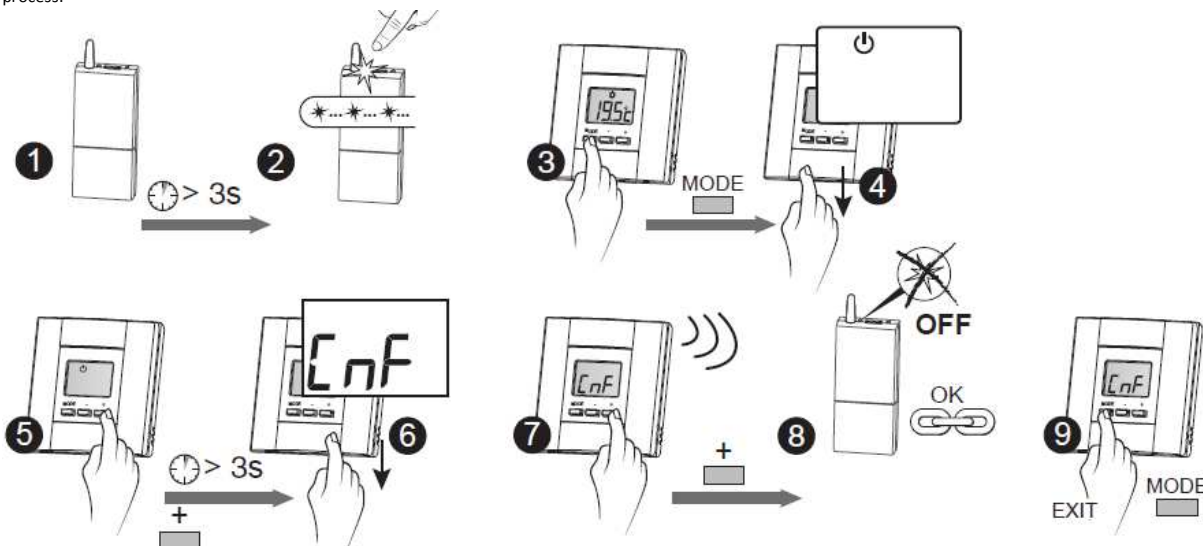
#### 23 Receiver



#### 24 Receiver



2. On the thermostat, press the **MODE** button until the display shows the  symbol, then press and hold the + button until the display reads **CnF**, finally press the + button once to confirm (if performed correctly the receiver should stop flashing at this point) and the **MODE** button will enable you to exit the association process.



### Additional Information: Receiver Button Functions

Reverse the relay contact (NO/NC)	=	Press and HOLD for 10 seconds (audible click)
Delete All Wireless Associations	=	Press and HOLD for 30 seconds (LED rapid flash & off)