

User Manual

1. Introduction

This SA413 Z-Wave 500 USB is a Z-Wave enabled device and is fully compatible with any Z-Wave enabled network. Z-Wave enabled devices displaying the Z-Wave logo can also be used regardless of manufacturer. A Sigma driver “ZW050x_USB_VCP_PC_Driver” and Sigma PC control software “ZWavePCController” are required to operate this device. A PC / notebook running Z-Wave software can control Z-Wave network through this USB.

Note: This is a hardware transceiver only. Sigma PC control software needs to be installed on your computer before using them as a Z-Wave Gateway.

2. Appearance

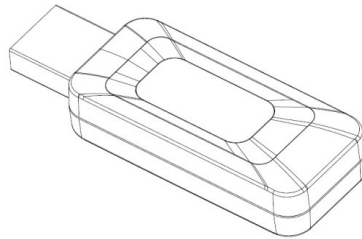


Figure 1 SA413 Appearance



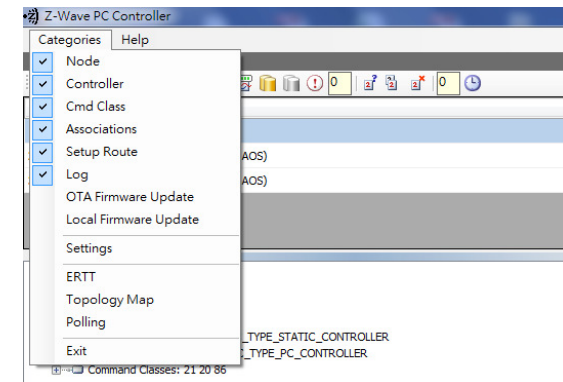
3. Installation

Plug the USB dongle into your PC or notebook and install all necessary drivers and software

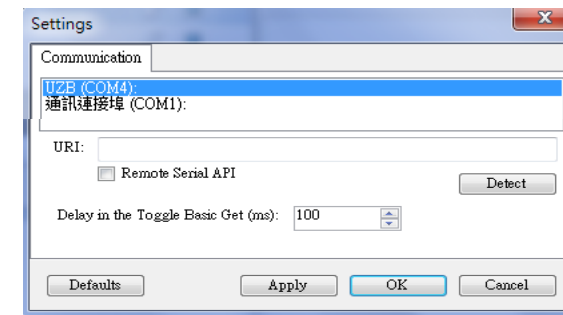
4. Operations

4.1 The communication interface must be set up after the Z-Wave PC Controller is installed.

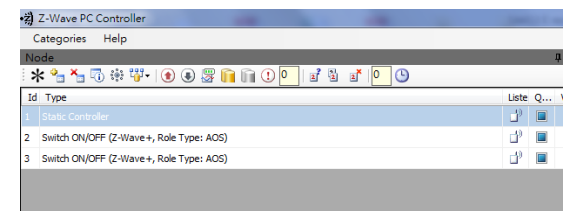
4.1.1 Click “Settings” under the “Categories” tab.




4.1.2 Click “USB”, then click “OK”.

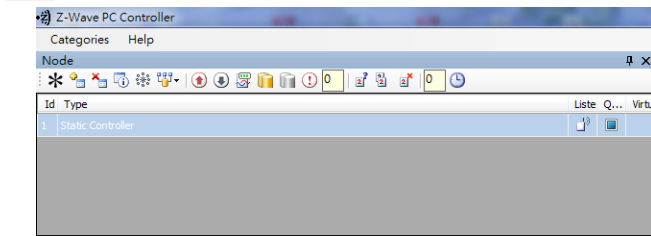


4.1.3 The device can be used after the ID is shown as 1 and Type is shown as “Static Controller”.

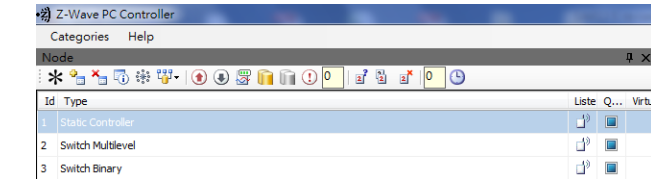


4.2 Inclusion:


Press “” and operate the device as shown.

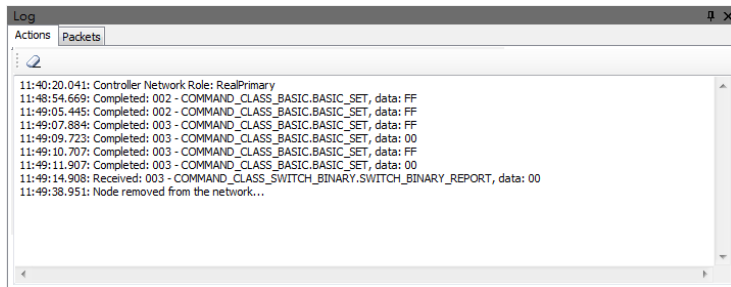


Successful binding will be listed in the device list as shown below:



4.3 Exclusion

Press “” and operate the device as shown. Device exclusion will be shown in the message log:



5. Functions and Report screen

- 5.1 Select a device and choose the “Command Class” tag. Commands supported by this device will be shown.
- 5.2 Select “COMMAND_CLASS_ASSOCIATION” -> “ASSOCIATION_SET”, set “Grouping identifier” and “Node ID” to “01”, then press “Send”. The device will now report back to the controller.
- 5.3 History data of controller transmittance and acceptance can be checked from the “Log” screen.

Action/Status	Description
Inclusion	1. Press “Add” button for Dongle to enter Include Mode.
	2. Please have Device in Include Mode.
Exclusion	1. Press “Remove” button for Dongle to enter Exclude Mode.
	2: Please have Device in Exclude Mode.
Reset	1. Press “Reset”button.
	2.Then the Home ID of Dongle will resume back to default value.

Troubleshooting

	Possible Cause	Solution
Unable to Pair	Device is controlled incorrectly.	See the device menu and check the pairing procedures.
	RF signal interference.	Operate again when there is no interference.
Pairing successful, but the device cannot be controlled or the device report cannot be received.	The maximum distance between the USB dongle and the device has been exceeded.	Shorten the distance between the USB dongle and device.
	RF signal interference.	Operate again when there is no interference.

Specifications

Operating Voltage	4.75 – 5.25V
Operating Temperature Range	-10 to 50°C (Indoor use only)
Storage Temperature Range	-20 to 60°C
Humidity	85%RH
Frequency	868.4MHz
Interface	USB
Operating Range	Up to 100m line of sight

Everspring Industry Co., Ltd.

3F., No.50, Sec. 1, Zhonghua Rd., Tucheng Dist., New Taipei City 236, Taiwan



www.everspring.com

WARNING:

Do not dispose of electrical appliances as unsorted municipal waste, use separate collection facilities instead. Please contact your local government for information regarding the collection systems available.

If electrical appliances are disposed of in landfills or dumps, hazardous substances can leak into the groundwater and get into the food chain, damaging your health and well-being.

When replacing old appliances with new ones, the retailer is legally obligated to take back your old appliance for disposal at least for free of charge.