



eldes

EKB3W

WIRELESS LED KEYPAD

User manual v1.6

Compatible with:

- ESIM364 all versions.
- EPIR v05.06.02 and up + EWT2 v16.17 and up.
- EPIR2 all versions.
- EPIR3 all versions.

Main features:

- Alarm system arming and disarming.
- Arming and disarming in Stay mode.
- System parameter configuration.
- PGM output control.
- Visual indication by LED indicators.
- Audio indication by built-in buzzer.
- Keypad partition switch.

EKB3W is a wireless LED keypad intended to use with ELDES alarm systems. The system configuration by EKB3W keypad is performed by activating the Configuration Mode and entering the required parameters and values. It is possible to connect up to 4 EKB3W devices to ELDES alarm system at a time. The maximum wireless connection range is 150m (492.13ft) (in open areas).

NOTE: For complete information on device operation with ELDES alarm system, please refer to ELDES alarm system installation manual located at www.eldes.it/download

1. CONTENT OF PACK

| Item | Quantity |
|--|----------|
| 1. EKB3W | 1 |
| 2. User manual..... | 1 |
| 3. 5,6kΩ resistor..... | 1 |
| 4. Screws | 4 |
| 5. 1,5V Alkaline AAA type batteries..... | 3 |

2. TECHNICAL SPECIFICATIONS

2.1 Electrical and Mechanical Characteristics

| | |
|--------------------------------------|--|
| Battery type | 1,5V Alkaline AAA type LR03 (IEC) / 24A (ANSI/NEDA) |
| Number of batteries | 3 |
| Battery operation time..... | ~12 months* |
| Wireless band..... | ISM868/ISM915 |
| Range of operating temperatures..... | -30...+55 °C (-22... +131°F) |
| Humidity | 0-90% RH @ 0... +40°C (0-90% RH @ +32... +104°F) (non-condensing) |
| Dimensions..... | 140x100x18mm (5.51x3.94x0.71in) |
| Wireless communication range..... | Up to 30m (98.43ft) in premises; up to 150m (492.13ft) in open areas |
| Compatible with alarm systems | ELDES Wireless |

* This operating time may vary in difference conditions.

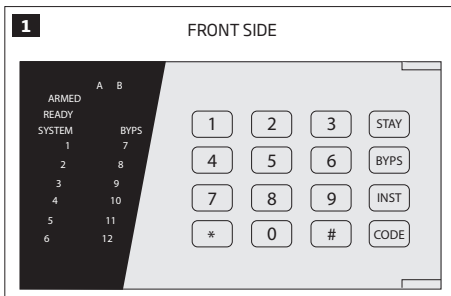
2.2 LED Functionality

| | |
|--------|---|
| ARMED | Steady ON - alarm system is armed / exit delay in progress; flashing - Configuration mode activated |
| READY | Steady ON - system is ready - no violated zones and tampers |
| SYSTEM | Steady ON - system faults; flashing - violated high-numbered zones |
| BYP5 | Steady ON - zone bypass mode |
| 1-12 | Steady ON - violated zone / flashing - violated tamper (only for EPIR/EPIR2/EPIR3) |

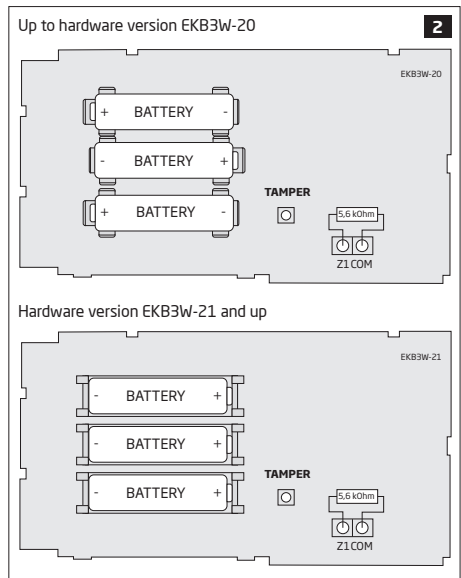
2.3 Keys Functionality

| | |
|-------------|--|
| [BYP5] | Zone bypass mode |
| [CODE] | System fault list / violated high-numbered zone indication / violated tamper indication (only for ESIM364) / violated high-numbered tamper indication (only for EPIR/EPIR2/EPIR3) |
| [*] | 1st character for Configuration mode activation/deactivation command (for ESIM364 up to v02.06.20; EPIR all versions; EPIR2 up to v1.01.08) / clear typed in characters / keypad partition switch (if enabled; only for ESIM364 up to v02.06.20) |
| [#] | Confirm (enter) command |
| [0] ... [9] | Command typing |
| [1]... [2] | Keypad partition switch (for ESIM364 v02.07.00 and up) |
| [STAY] | Manual system arming in Stay mode |
| [INST] | 1st character for Configuration mode activation/deactivation command (for EPIR2 v1.01.11 and up; EPIR3 all versions; ESIM364 v02.07.00 and up) |

2.4 Main Unit & Connector Functionality



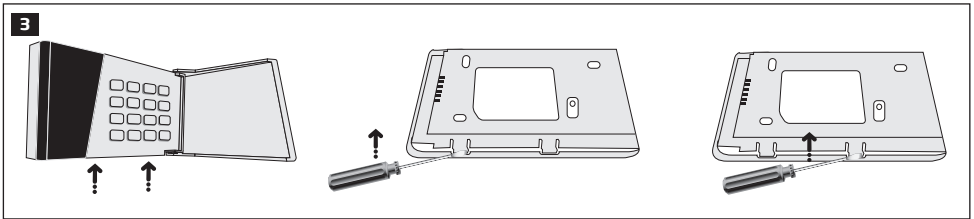
| | |
|--------|------------------------|
| TAMPER | Tamper switch |
| + / - | Battery slots |
| COM | Common terminal |
| Z1 | Security zone terminal |



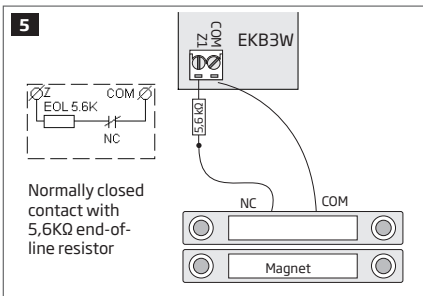
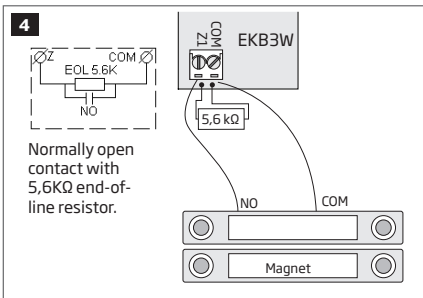
3. INSTALLATION

NOTE: Before installing the wireless device, we highly recommend to refer to **RADIO SYSTEM INSTALLATION AND SIGNAL PENETRATION** manual located at www.eldes.it/download

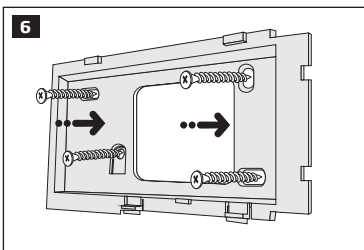
1. Detach the keypad holder from EKB3W front side.



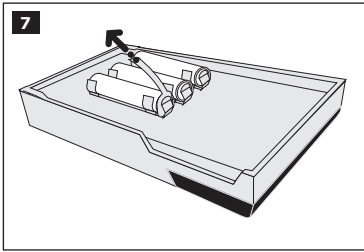
2. Connect a sensor and the resistor across Z1 and COM terminals in accordance with zone connection Type 1 or Type 2.



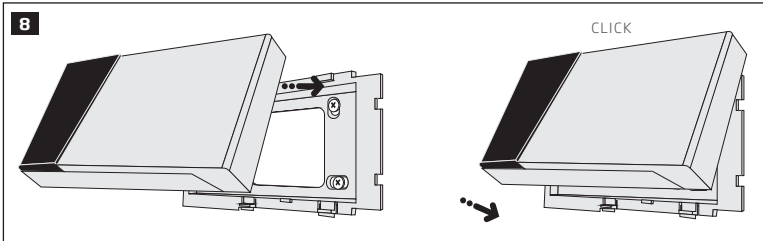
3. Mount the keypad holder on the wall using the screws.



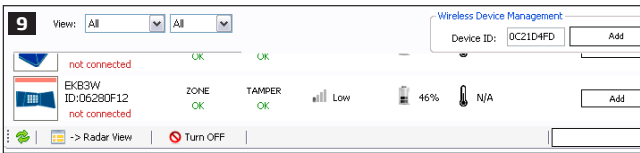
4. Remove the plastic tab inserted between one of the battery terminals and battery slot contacts.



5. Insert the keypad into the holder.



6. Pair the device with the alarm system using *ELDES Configuration Tool* software. Open **Wireless Device Management** section and enter a 8-digit wireless device ID located on the EKB3W enclosure and press **Add** button. The device can also be paired by sending a corresponding command via SMS message. For more details, please, refer to the software's HELP section and ELDES alarm system installation manual.



7. Upon the successful pairing process, the message indicated next to EKB3W device icon will turn to **CONNECTED**. If the attempt to pair is unsuccessful, try to move EKB3W closer to the ELDES alarm system and pair anew.
8. EKB3W keypad is ready for use.

ATTENTION: Before fixing the keypad into the holder, please make sure that the tamper is properly pressed (see fig. #2).

NOTE: By default, the keypad zone and tamper is enabled, therefore a resistor supplied with the EKB3W keypad must be connected to the keypad zone terminal and the tamper switch must be properly pressed in when inserting the keypad into the holder. By disabling the keypad zone, the keypad tamper will disable as well (see ELDES alarm system installation/user manual to find out how to disable zones and tampers).

NOTE: If you are unable to pair the wireless device, please restore the parameters of the wireless device to default and try again (see chapter **6. RESTORING DEFAULT PARAMETERS**).

4. EKB3W ZONE AND TAMPER

Upon successful EKB3W device pairing process, the system adds 1 wireless Instant-type zone intended for wired detection device connection, such as magnetic door contact.

In case of tamper violation, the alarm is caused regardless of system being armed or disarmed. There are 2 ways to detect tamper violation on EKB3W:

- **By tamper switch.** EKB3W comes equipped with a built-in tamper switch intended for enclosure supervision: The tamper switch is located on the back of the PCB supervising the back side of the enclosure in case the device is illegally detached. Once the enclosure of EKB3W is tampered, the tamper switch will become triggered. This action will be followed by alarm, resulting in sending an SMS text message and/or phone call to the user. The SMS text message contains the violated tamper name.
- **By wireless connection loss.** The wireless connection loss between EKB3W and ELDES alarm system leads to alarm. The system identifies this event as a tamper violation and sends an alarm by SMS text message and phone call to the listed user phone number, by default. The SMS text message contains the wireless device model, wireless ID code and tamper name. The user will also be notified by SMS text message as soon as the wireless signal is restored.

ATTENTION: The tamper will not operate if the wireless zone is disabled.

5. BATTERY REPLACEMENT

1. Open EKB3W enclosure.
2. Remove all 3 old batteries from the battery slots.
3. Position the 3 new 1,5V alkaline AAA type batteries according to the appropriate battery slot positive/negative terminals indicated on the PCB (printed-circuit-board) of EKB3W.
4. Insert the batteries into the battery slots.
5. Batteries replaced.

See chapter **3. INSTALLATION** for more details.

ATTENTION: Only 1,5V Alkaline AAA type batteries can be used. Install only new, high quality and unexpired batteries. Do not mix the old batteries with the new ones.

ATTENTION: At least 1 battery must be removed if the device is not in use.

ATTENTION: In order to avoid fire or explosion hazards, the system must be used only with approved battery. Special care must be taken when connecting positive and negative battery terminals. Dispose old batteries only into special collection sites. Do not charge, disassemble, heat or incinerate old batteries.

NOTE: The system sends an SMS text message to the listed user phone number as soon as the battery level runs below 5%.

NOTE: The battery status can be monitored in real -time using *ELDES Configuration Tool* software.

6. RESTORING DEFAULT PARAMETERS

1. Remove one battery from EKB3W.
2. Press and hold the [*] key.
3. Insert the battery back to EKB3W.
4. Hold the [*] key until LED **READY** starts flashing.
5. Wait until LED **READY** turns off and LED **ARMED** starts flashing.
6. Release the [*] key.
7. Parameters reset to default.

7. ADDITIONAL INFORMATION

Limited Liability

The buyer must agree that the system will reduce the risk of fire, theft, burglary or other dangers but does not guarantee against such events. "ELDES UAB" will not take any responsibility regarding personal or property or revenue loss while using the system. "ELDES UAB" liability according to local laws does not exceed value of the purchased system. "ELDES UAB" is not affiliated with any of the Internet providers therefore is not responsible for the quality of Internet service.

Manufacturer Warranty

This device carries a 24-month warranty by the manufacturer "ELDES UAB". Warranty period starts from the day the system has been purchased by the end user. The warranty is valid only if the system has been used as intended, following all guidelines listed in the manual and within specified operating conditions. Receipt must be kept as a proof of purchase date. The warranty is voided if the system has been exposed to mechanical impact, chemicals, high humidity, fluids, corrosive and hazardous environment or other force majeure factors.

Safety instructions

Please read and follow these safety guidelines in order to maintain safety of operators and people around:

- DO NOT use the system where it can be interfere with other devices and cause any potential danger.
- DO NOT use the system with medical devices.
- DO NOT use the system in hazardous environment.
- DO NOT expose the system to high humidity, chemical environment or mechanical impacts.
- DO NOT attempt to personally repair the system.



The WEEE (Waste Electrical and Electronic Equipment) marking on this product (see left) or its documentation indicates that the product must not be disposed of together with household waste. To prevent possible harm to human health and/or the environment, the product must be disposed on in an approved and environmentally safe recycling process. For further information on how to dispose of this product correctly, contact the system supplier, or the local authority responsible for waste disposal in your area.

Copyright © "ELDES UAB", 2015. All rights reserved

It is not allowed to copy and distribute information in this document or pass to a third party without advanced written authorization by "ELDES UAB". "ELDES UAB" reserves the right to update or modify this document and/or related products without a warning. Hereby, "ELDES UAB" declares that this wireless LED keypad EKB3W is in compliance with the essential requirements and other relevant provisions of Directive 1999/5/EC. The declaration of conformity may be consulted at www.eldes.it

CE 1383

Made in Lithuania.
www.eldes.lt